



## Self-Propelled Telescopic Booms

S-80/S-85™

- The ultimate  
in reach, performance  
and range.



**Genie Industries**

# Get the greatest reach and versatility with our

Genie's stick boom family includes faster lift speed, a more powerful engine, a stiffer mast and updated styling. Choose the Genie S-80 Boom, with 86 ft (26.4 m) of working height, or the S-85, with an additional 5 ft (1.52 m) articulating jib boom. Customize your boom with many option packages.



## Terrain Tracking Active Oscillation System

This revolutionary system automatically senses the terrain and adjusts the front axle oscillation based on ground conditions. The system maximizes four point contact with the ground for improved traction and an amazingly smooth ride.

## Standard Features

### Powerful Engines

The enhanced performance engines are stronger and more powerful. In demanding conditions the power is there. With normal duty, longer engine life.

### Proportional Controls

Allow smooth operation and easy positioning.

### 160° Hydraulic Platform Rotator

Gives you precise placement without repositioning the boom.

### Easily Accessible Components

The swing-out engine tray, clear access to hydraulic components and easy-to-understand electrical system simplify routine maintenance.

### Positive Traction Drive

Full time 4 wheel drive and full time positive traction in both high and low drive speeds.

### Drive Enable System

Informs operator when the drive and steer functions will move opposite the controller movements.

### Low-Profile Chassis Covers

Provide high visibility for the operator while unit is in stowed position.

### Platform Controls

Large, simple-to-use controls for easy operation.

### Transportability

The S-80 and S-85 are designed to load and unload easily from transport vehicles.

### Drive and Extend Axles

Extendable axles operate from the platform. Setup is one step. Simply activate extend function while driving the machine and the axles automatically extend, lock in place and enable platform elevation.

### Fast and Efficient Lift Speed

The capability to operate multiple functions simultaneously results in maximum lift speed. The S-80 elevates from the ground to full height in just 80 seconds.



or unique jib option.

Easily customized to meet  
your needs:

#### Engine Options

##### **Tier II Emission Compliant**

Ford LRG 425 EFI Gas/LPG 82 hp (61 kw)

Deutz Diesel F4L 913 78 hp (58 kw)

Perkins Diesel 704-30 63 hp (47 kw)

#### Platform Options

Standard: Steel 6 ft (1.83 m)

Optional: Steel 8 ft (2.44 m)

#### Heavy Duty Welder Package

Genie's powerful and robust Heavy Duty Welder Package exceeds the specifications of any boom welding system currently on the market. Powered by a hydraulically driven 208 VAC 3-phase generator driven by a closed-loop two speed hydraulic drive pump, Genie's welding system produces 12,500 continuous and 13,500 peak watts.

Genie S-85



#### **S-85 Out-and-Up Articulating Jib Boom**

This special option gives you an additional 5 ft (1.52 m) of horizontal reach for a total of 77 ft (23.4 m). The S-85 jib gives you flexibility too – 135° of working range. You not only access 75° above horizontal, but you can get to 60° below horizontal.

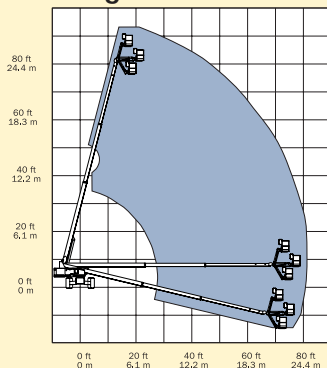
## Standard Features

- S-80 has 86 ft (26.4 m) working height
- S-85 has 91 ft (27.9 m) working height
- S-80 has 72 ft (21.9 m) horizontal reach
- S-85 has 77 ft (23.4 m) horizontal reach
- Up to 600 lb (272 kg) lift capacity on the S-80
- 500 lb (227 kg) lift capacity on the S-85
- Extendable axles operated from the platform
- Dual extended cylinders
- Meets current emissions requirements
- Dual fuel (Gas/LPG) or diesel engine options
- Fully proportional platform controls with ramp up/down feature
- Hydraulic platform rotation
- 360° continuous turntable rotation

- 12V DC auxiliary power
- Fuel select switch on platform and ground control panels (Gas/LPG models)

- Closed-loop two speed hydrostatic drive
- Positive traction drive
- Drive enable system
- Self-leveling platform
- Rough terrain air tires
- Locking turntable covers
- Anti-restart engine protection
- Auto engine fault shutdown
- AC wiring to platform
- Wire braided hose
- Tilt alarm
- Horn
- Hour meter

## Range of Motion

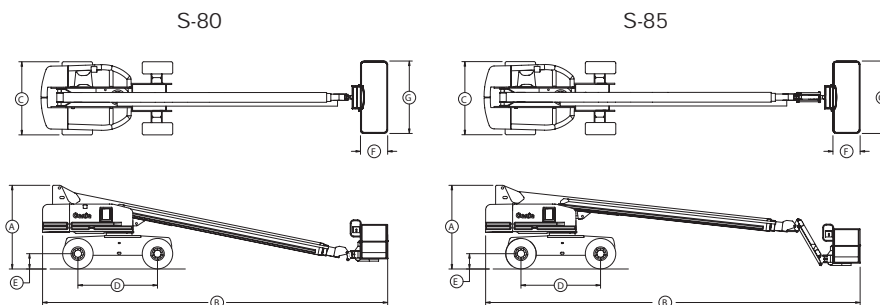


## Options and Accessories

- Heavy duty welder package
- Alarm package
- Cold start packages
- 3500 watt AC generator
- 8 ft (2.44 m) steel platform
- 750 lb (340 kg) lift capacity option on the S-80
- Platform swing gate
- Air line to platform
- Platform rail pinch guard
- Platform work lights
- Control box covers
- Tool tray
- Fluorescent tube caddy
- Hostile environment packages
- LPG tank
- GS/LPS rating for Ford engine powered machines
- Rough terrain foam-filled tires
- Driving lights
- Pipe cradle
- Hydraulic oil cooler

## Standards Compliance

- ANSI/SIA A92.5
- CAN3-B354.4
- CE compliance option
- AS 1418.10



## Specifications

Model	S-80		S-85	
	<b>US</b>	<b>Metric</b>	<b>US</b>	<b>Metric</b>
Working height max*	86 ft	26.4 m	91 ft	27.9 m
Platform height max	80 ft	24.4 m	85 ft	25.9 m
(A) Height - stowed	9 ft 2 in	2.8 m	9 ft 2 in	2.8 m
(B) Length - stowed	36 ft 8 in	11.2 m	40 ft 7 in	12.4 m
Length - transport				
Jib tucked under	—	—	35 ft	10.67 m
(C) Width axles retracted	8 ft	2.43 m	8 ft	2.43 m
Width axles extended	10 ft	3.04 m	10 ft	3.04 m
(D) Wheelbase	9 ft	2.74 m	9 ft	2.74 m
(E) Ground clearance	11 in	28 cm	11 in	28 cm
(F) Platform length: 6 ft	30 in	76 cm	30 in	76 cm
8 ft	36 in	91 cm	36 in	91 cm
(G) Platform width: 6 ft	72 in	1.83 m	72 in	1.83 m
8 ft	96 in	2.44 m	96 in	2.44 m
Horizontal reach max	72 ft	21.9 m	77 ft	23.4 m
Lift capacity	600 lb	272 kg	500 lb	227 kg
6 ft platform				
Lift capacity	500 lb	227 kg	500 lb	227 kg
8 ft platform				
Turning radius - outside	23 ft	7 m	23 ft	7 m
Turning radius - inside	10 ft 8 in	3.24 m	10 ft 8 in	3.24 m
Turntable rotation	360° continuous		360° continuous	
Turntable tailswing	3 ft 8 in	1.13 m	3 ft 8 in	1.13 m
Power source	Ford LRG 425 EFI Gas/LPG 82 hp (61 kw) Deutz Diesel F4L 913 78 hp (58 kw) Perkins Diesel 704-30 63 hp (47 kw)			
Controls	12V DC proportional		12V DC proportional	
Platform rotation	160 Degrees		160 Degrees	
Auxiliary power unit	12V DC		12V DC	
Tires	15-22.5 SAT		15-22.5 SAT	
Drive speed, stowed	3.3 mph	5.3 km/h	3.3 mph	5.3 km/h
4x4 models				
Drive speed, raised or extended	0.68 mph	1.1 km/h	0.68 mph	1.1 km/h
Gradeability, stowed	45%		45%	
4x4 models				
Hydraulic tank capacity	45 gal	170 litre	45 gal	170 litre
Fuel tank capacity	33 gal	125 litre	33 gal	125 litre
Weight**	33,380 lb	15,141 kg	35,860 lb	16,266 kg

\* The metric equivalent of working height adds 2 m to platform height. U.S. adds 6 ft to platform height.  
\*\* Weight will vary depending on options and/or country standards.

Distributed By:

## Genie Industries

### GENIE UNITED STATES

18340 NE 76th Street  
P.O. Box 97030  
Redmond, Washington 98073-9730  
Telephone (425) 881-1800  
Toll Free in USA/Canada 800-536-1800  
Fax (425) 883-3475  
<http://www.genieindustries.com>

### GENIE UNITED KINGDOM

The Maltings, Wharf Road  
Grantham  
Lincolnshire NG31 6BH  
England  
Telephone: +44 (0)1476 584333  
Fax: +44 (0)1476 584334  
<http://www.genieindustries.com>