

# GROVE®

## A80J



- ▶ 80 ft. (24.4 m) Platform Height
- ▶ 64 ft. 6 in. (19.7 m) of Horizontal Reach
- ▶ Unbeatable Performance
- ▶ Exceptionally Stable Platform

## ARTICULATING BOOM WORK PLATFORM



The **A80J** ... for unsurpassed reach and flexibility in an 80 ft. (24.4 m) articulated boom machine!!

With its exclusive vierendeel embossed trapezoidal boom and massive triple cell riser the A80J offers the industry's leading horizontal outreach with outstanding platform stability.

### Maximum Productivity

The A80J combines industry leading horizontal reach, three dimensional platform positioning, and large unrestricted working range.



- ▶ Over 21 ft. (6.4 m) of up and over height combined with the patented center-line boom/riser design.
- ▶ 8 ft. (2.4 m) articulating jib with 95° of articulation.
- ▶ True multi-function capability in **both** high and low engine rpm.
- ▶ Large standard platform means a more spacious work environment for the operator.

### Unbeatable Drive Performance

Tough job site conditions are no match for the A80J!



- ▶ Full time four wheel drive.
- ▶ Standard four wheel crab and coordinated steer for unmatched maneuverability.
- ▶ Gradeability \*(theoretical) up to 50%.
- ▶ Rotary flow divider drive system automatically intensifies flow and pressure to the drive wheels with the most traction.
- ▶ Choice of powerful 100 hp (75 kW) Cummins diesel or 110 hp (82 kW) Ford dual fuel engines.

### Easier to use

The A80J is designed to facilitate operator confidence and training.



- ▶ Universal control box layout offers color coded symbols and text on a high visibility white panel.
- ▶ Smooth proportional controls for drive and boom functions with adjustable ramp-to-zero.
- ▶ Proportional controls are adjustable for individual preference.
- ▶ 15 second timer enable footpedal with enable light.

### Innovative Styling. Greater Serviceability.

Eye catching, yet practical styling combines mechanic friendly features with a bold look.



- ▶ Large fiberglass panels are easily removed to provide easy access for routine maintenance.
- ▶ Variable displacement axial piston pump supplies only the pressure and flow needed which eliminates the need for extra valving and hoses.
- ▶ Consolidated hydraulic components provide ease of serviceability.
- ▶ Robust heavy-duty designed unit.

### Standard Features

- ▶ 36 x 96 in. (0.9 x 2.4 m) aluminum platform with swing gate, inside hand rails and 180° platform rotator
- ▶ 110 VAC receptacle with GFI in the platform
- ▶ All motion and tilt alarms
- ▶ Patented control enable system
- ▶ 360° continuous superstructure rotation
- ▶ 12 volt DC auxiliary power
- ▶ Lifting and tie down lugs
- ▶ Foam-filled tires

### Options

- ▶ Lights package – drive and backup and platform worklights
- ▶ Amber strobe light
- ▶ 2000 watt 110 VAC generator
- ▶ 120 psi air line to platform
- ▶ 6 ft. (1.8 m) platform
- ▶ Hostile environment package

## A80J Specifications

### Platform

Working Height	86 ft. (26.2 m)
Platform Height	80 ft. (24.4 m)
Horizontal Reach	64 ft. 6 in. (19.7 m)
Up and Over Height	22 ft. 1 in. (6.7 m)
Platform Capacity	500 lb. (227 kg)
Platform Rotation	180 degrees
Jib Length	8 ft. 0 in. (2.4 m)
Jib Articulation	95 degrees

### Dimensions

Platform size (steel)	36 in. x 96 in. (0.9 x 2.4 m)
Overall Height (stowed)	9 ft. 8 in. (2.9 m)
Overall Length	39 ft. 6 in. (11.1 m)
Overall Width	8 ft. 0 in. (2.4 m)
Wheelbase	12 ft. 0 in. (3.7 m)
Ground Clearance	12 in. (0.3 m)

### Power Source

Engine	Ford 649 dual fuel rated @ 110 HP (82 kW)
	Cummins 3.9 diesel rated @ 100 HP (75 kW)
Fuel Tank Capacity	45 gal. (170 L)

### Performance

Main Boom Lift Speed	68 sec.
Riser Lift Speed	35 sec.
Telescope out	40 sec.
Drive Speed	2.5 mph (4.0 kp/h)
Gradeability *(theoretical)	50%
Turning Radius:	
Inside	8 ft. 10 in. (2.7 m)
Outside	17 ft. 6 in. (5.33 m)
Tailswing	12 in. (0.30 m)

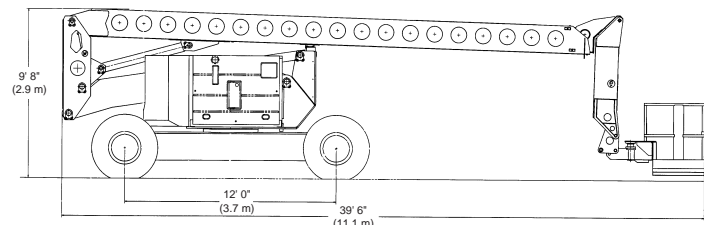
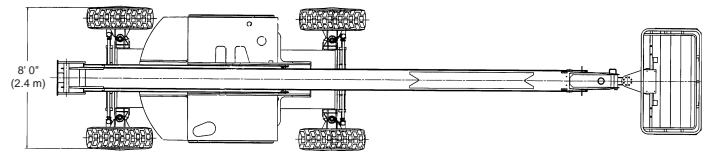
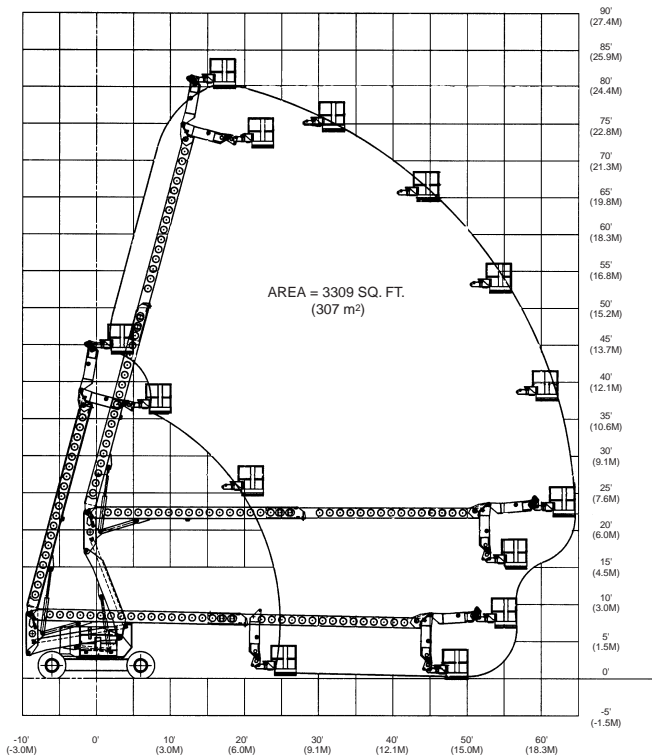
### Hydraulics

Reservoir Capacity	50 gal. (189 L)
Pump Type	Piston
Auxiliary Power	12 VDC

### Shipping Information

Gross Vehicle Weight	42,800 lb. (19,415 kg)
Shipping Cube	2,774 ft. <sup>3</sup> (78.5 m <sup>3</sup> )

\*Published machine gradeability is theoretical. Machine to be in stowed position. Always operate machine on a firm, level surface when elevated.





## Product Protection Plan

**One-year parts warranty**

**One-year labor warranty**

**Seven-year structural warranty**

In addition to cutting-edge equipment and innovative features, Grove Manlift® offers a comprehensive product protection plan. Under the plan, all new Grove Manlift® aerial work platforms are warranted to be free from defects in material and workmanship for one full year. All structural components – including risers, booms, masts, turntables, and frames – are covered for seven years.\* Get the Grove Manlift® Product Protection Plan today!

\*See warranty information for any limitations or restrictions that may apply.

**Grove Worldwide**  
**Grove Worldwide - World Headquarters**  
*Western Hemisphere, Asia/Pacific*  
1565 Buchanan Trail East  
P.O. Box 21  
Shady Grove, Pennsylvania 17256, USA  
Phone: [Int + 1] (717) 597-8121  
Fax: [Int + 1] (717) 593-5303

**Grove Europe Limited\***  
*Europe, Africa, Middle East*  
*Sales & Marketing*  
1 Emperor Way  
Doxford International Business Park  
Sunderland SR3 3XR, England  
Phone: [Int + 44] (191) 515-7253  
Fax: [Int + 44] (191) 564-0442

**Lifetime Customer Support**  
*Western Hemisphere*  
1086 Wayne Avenue  
Chambersburg, Pennsylvania 17201, USA  
Phone: [Int + 1] (717) 263-5100  
Fax: [Int + 1] (717) 263-0404

\*Grove Europe Limited,  
Registered in England, Number 1845126

<http://www.groveworldwide.com>

Distributed By:

Constant improvement and engineering progress make it necessary that we reserve the right to make specification, equipment, and price changes without notice. Illustrations shown may include optional equipment and accessories and may not include all standard equipment.

GROVE® and GROVE LOGO are registered trademarks of GROVE in the U.S. and/or other countries. Copyright ©2000 GROVE. All rights reserved.