

# 120 Feet Above the Rest

The JLG Model 120HX telescopic boom lift offers the highest level of performance of all the HX Models.

The Model 120HX combines a number of additional standard features and a faster boom movement for improved operator efficiency.



## 120HX Boom Lift Advantages

- Standard four-wheel drive with planetary gear reduction
- Standard four-wheel/crab steering for manoeuvring in confined areas
- Exclusive Load Management Indicator System with audio/visual alert system
- 3.96 m (13 ft.) Extend-A-Reach feature for improved platform positioning



### Flexible Controls

Low maintenance, moisture resistant electric/hydraulic proportional controls provide smooth operation for drive, lift and swing. All boom functions are available from the ground for maintenance or emergency lowering. Drive and steer controls are on a remote box for transport loading (shown).

### Power Telescoping Boom

The four-section boom on the 120HX features a standard 3.96 m (13 ft.) Extend-A-Reach feature for improved platform positioning around obstacles. The Extend-A-Reach can be swung around and is pinned to reduce stowed length (shown).



## PERFORMANCE FEATURES

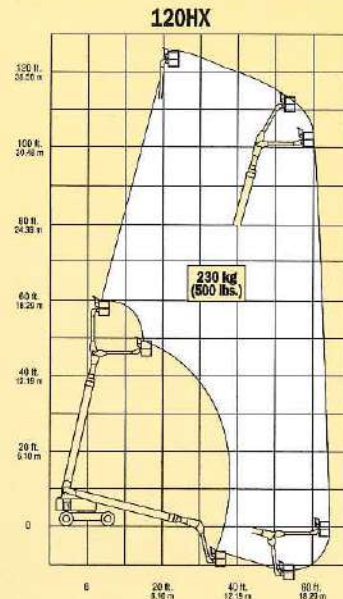
### Standard Features Include:

|   |                               |
|---|-------------------------------|
| Hydraulic Extendible Axles (Front & Rear) | Tilt Light and Alarm          |
| 0.91 x 1.83 m (36 x 72 in.) Platform      | Rim Protector Lug Tread Tyres |
| Inward Swinging Gate                      | 12V-DC Auxiliary Power        |
| 180 Degree Hydraulic Platform Rotator     | Proportional Controls         |
| AC Cable to Platform                      | Lifting/Tie Down Lugs         |
| Foam Filled Tyres                         | Chassis Jack                  |

### Available Options:

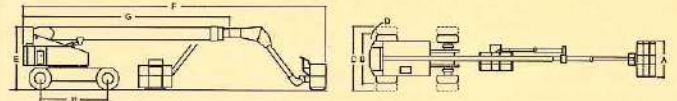
|   |  |
|---|--|
| Platform Work Lights                        | <sup>1</sup> Includes tilt, flashing amber beacon and all motion alarm.                        |
| 13 mm (1/2 in.) Air Line to Platform        | <sup>2</sup> Low oil pressure and high temperature alarms.                                     |
| 2500W Generator                             | <sup>3</sup> Includes ether assist (Deutz).  |
| Head and Tail Lights                        | <sup>4</sup> Includes boom wiper seals, cylinder bellows, turntable shield, and console cover. |
| Tow Package                                 |  |
| Travel Alarm                                |  |
| All Motion Alarm                            |  |
| Flashing Amber Beacon                       |  |
| All Alarm Package <sup>2</sup>              |  |
| Engine Distress Warning <sup>2</sup>        |  |
| Cold Weather Start Kit (Deutz) <sup>3</sup> |  |
| Hostile Environment Kit <sup>4</sup>        |  |

## JLG MODEL 120HX



### REACH SPECIFICATIONS

|                             |                                |
|-----------------------------|--------------------------------|
| Platform Height             | 36.58 m (120 ft.)              |
| Horizontal Outreach         | 16.76 m (55 ft.)               |
| Swing                       | 360° Continuous                |
| Platform Capacity           | 230 kg (500 lbs.)              |
| Platform Rotator            | 180° Hydraulic                 |
| Jib (Range of Articulation) | 3.96 m (13 ft.) 95° (+15, -80) |



### DIMENSIONAL DATA

|                                    |                                   |
|------------------------------------|-----------------------------------|
| A. Platform Size                   | 0.91 x 1.83 m (36 x 72 in.)       |
| B. Overall Width (Axles Retracted) | 2.59 m (8 ft. 6 in.)              |
| C. Overall Width (Axles Extended)  | 3.3 m (10 ft. 10 in.)             |
| D. Tailswing (Axles Extended)      | 86 cm (2 ft. 10 in.)              |
| E. Stowed Height                   | 3.15 m (10 ft. 4 in.)             |
| F. Stowed Length (Working)         | 15.95 m (52 ft. 4 in.)            |
| Stowed Length (Transport)          | 10.95 m (35 ft. 11 in.)           |
| G. Wheelbase                       | 3.47 m (11 ft. 4.5 in.)           |
| H. Ground Clearance                | 30 cm (12 in.)                    |
| Gross Vehicle Weight*              | 19,750 kg (43,550 lbs.)           |
| Max. Ground Bearing Pressure       | 10.5 kg/cm <sup>2</sup> (149 psi) |

### CHASSIS

|                          |                         |
|--------------------------|-------------------------|
| Drive Speed              | 4.43 kph (2.75 mph)     |
| Gradeability             | 40%                     |
| Turning Radius (Inside)  |                         |
| Axles Retracted          | 3.91 m (12 ft. 10 in.)  |
| Axles Extended           | 3.23 m (10 ft. 7 in.)   |
| Turning Radius (Outside) |                         |
| Axles Retracted          | 5.74 m (18 ft. 0 in.)   |
| Axles Extended           | 5.74 m (18 ft. 10 in.)  |
| Tyre Size/Type           | 385/65R22.5 Foam Filled |

### POWER SOURCE

|                     |                            |
|---------------------|----------------------------|
| Diesel Engine       | Deutz F4L912 52 kW (70 hp) |
| Fuel Tank Capacity  | 98 L (26 gal.)             |
| Hydraulic Reservoir | 189 L (50 gal.)            |
| Auxiliary Power     | 12V DC                     |

\*Certain options or country standards will increase weight