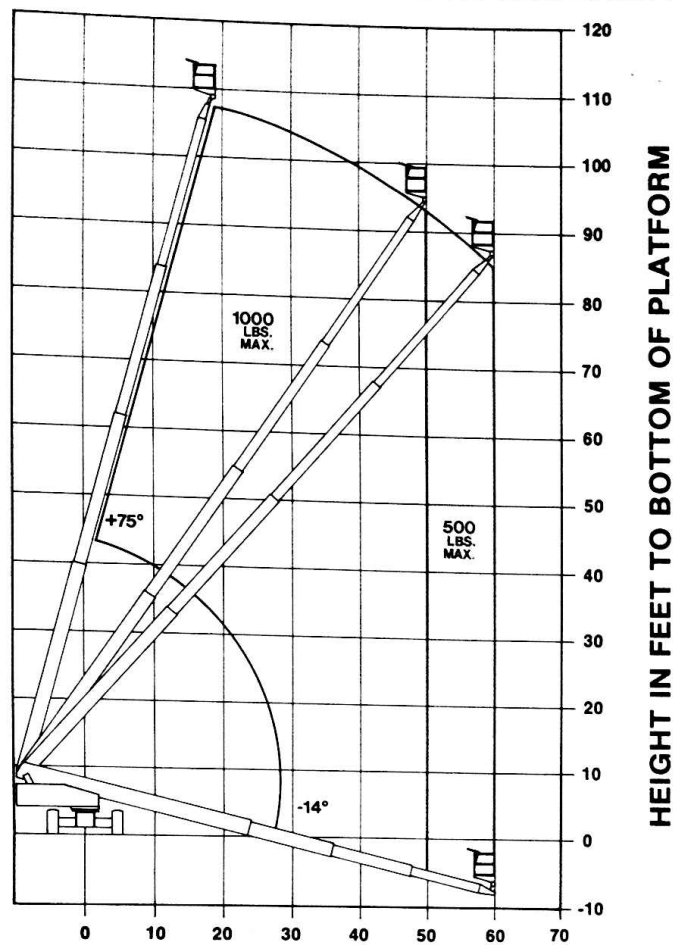


MAXIMUM ALLOWABLE PLATFORM LOADS

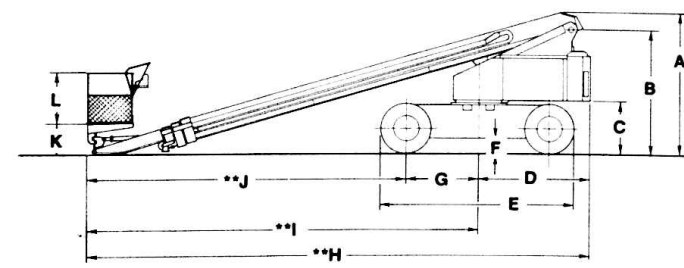


HEIGHT IN FEET TO BOTTOM OF PLATFORM

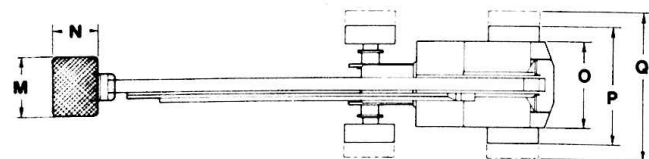
DIMENSIONS	100HX/110HX
A	9' 10" (3.00 m)
B	8' 4" (2.54 m)
C	3' 8 5/8" (1.13 m)
D	7' 11 1/2" (2.13 m)
E	14' 6 13/16" (4.44 m)
F	10" (25 m)
G	5' 6" (1.68 m)
H 100HX	36' 2 7/16" (11.04 m)
H 110HX	38' 8 7/16" (11.80 m)
I 100HX	28' 3 1/8" (8.62 m)
I 110HX	30' 9 1/8" (9.37 m)
J 100HX	27' 9 1/8" (8.51 m)
J 110HX	29' 1 1/8" (8.78 m)
K	2' 3 3/4" (77 m)
L	42" (1.07 m)
M	96" (2.44 m)
N	36" (91 m)
O	6' 10" (2.08 m)
P	8' 6" (2.59 m)
Q	10' 10" (3.30 m)

SPECIFICATIONS	100HX/110HX
PLATFORM HEIGHT: 100HX	100 ft (30.49 m)
PLATFORM HEIGHT: 110HX	110 ft (33.54 m)
CAPACITIES RESTRICTED:	1000 lbs (454 kg)
UNRESTRICTED:	500 lbs (227 kg)
HORIZONTAL REACH:	60 ft 0 in.
GROSS WEIGHT: 100HX	38,000 lbs (17237 kg)
GROSS WEIGHT: 110HX	40,500 lbs (18410 kg)
TURNING RADIUS: (outside)	22 ft 10 1/4 in. (6.97 m)
SWING SPEED:	0.5 RPM
HYDRAULIC PRESSURE:	3500 PSI (246 kg/sq cm)
MAIN PUMP OUTPUT:	33 gpm @ 2400 RPM @ 3500 PSI (124.9 l/min)
AUXILIARY PUMP OUTPUT:	4.75 gpm (18.0 l/min)
HYDRAULIC TANK CAPACITY:	55 U.S. gals (208.2 l)
ENGINE:	Ford LSG-423 Gas 63 BHP @ 2800 RPM
FUEL TANK CAPACITY:	26 U.S. gals (98.4 l)
GRADEABILITY:	20% on hard surface
SPEED: (approx.)	2.8 MPH (4.48 km/hr)
TAIL SWING:	4 ft 0 in (1.22 m)
TIRES:	
FRONT:	15 x 22.5 Urethane Filled
REAR:	15 x 22.5 Urethane Filled

REACH IN FEET FROM AXIS OF ROTATION



**DIMENSIONS SHOWN ARE WITH ROTATING PLATFORM. MACHINES WITH NON-ROTATING PLATFORM 10" LESS.



JLG LIFT is a U.S. registered trademark of JLG Industries. Patents D227091, 3776367, 3874473 and 4132040.

This machine meets or exceeds applicable OSHA Regulations in 29 CFR 1910.67, 1926.451 (f), 1926.556, and ANSI A92.5-1980, as originally manufactured for intended applications.

Due to continuous improvements we reserve the right to make specification and/or equipment changes without prior notification.

JLG PERFORMING AT A HIGHER LEVEL

JLG Industries, Inc. ■ JLG Drive ■ McConnellsburg, PA 17233-9502
Telephone 717-485-5161 ■ Telex 6854803 JLG UW

For more information contact: