

JLG®

CONSTRUCTION

40H

40' STRAIGHT BOOM

A high performance, telescopic boom lift designed with extra power and exceptional stability for a wide variety of maintenance, construction and the most demanding high reach access applications. Rugged all-steel fabrication for longer service life.



The high capacity of the 40H is enhanced by an optional 8 ft. (2.44m) wide work platform enabling more workers to tackle larger jobs.





CONSTRUCTION

40H

40' STRAIGHT BOOM

A high performance, telescopic boom lift designed with extra power and exceptional stability for a wide variety of maintenance, construction and the most demanding high reach access applications. Rugged all-steel fabrication for longer service life.



The high capacity of the 40H is enhanced by an optional 8 ft. (2.44m) wide work platform enabling more workers to tackle larger jobs.

PLATFORM

Large 36" x 60" (.91m x 1.52m) wide basket is standard. Tubular, welded all-steel construction results in excellent durability. Wire mesh to midrail keeps tools and materials within confines of the platform. Steel grate floor is skid-resistant and provides visibility when lowering platform. Powered rotator is standard for flexibility in positioning platform. Capacity: 1000 lbs. (454 kg.) and 750 lbs. (341 kg.) restricted, 500 lbs. (227 kg.) unrestricted. JLG's exclusive capacity indicator system incorporates a tri-colored tape design on the boom with a capacity indicator wheel which revolves according to changes in boom angle to determine allowable platform load. Higher capacity at the higher (working) angles results in greater worker productivity.

ENGINE

A 63 horsepower-rated gasoline powered Ford LSG-423 water-cooled engine for efficient, powerful operation, long service life and reduced maintenance. Precision governor control regulates idle to help save fuel and lower operating noise. Optional 42 hp air-cooled Deutz F3L1011 industrial strength diesel engine provides ample horsepower and efficient, reliable service when diesel is the power source.

PLATFORM CONTROLS

Low maintenance moisture resistant electric/hydraulic proportional controls provide smooth operation for Drive, Lift and Swing, Ramping feature delays full power on and off for smooth starts and stops. Telescope, Steer, Platform Leveling, Platform Rotate, Drive Speed, Engine Speed, Wheel Motor Speed, Ignition/Start, Auxiliary Power, Horn, Emergency Stop, 5 degree Slope Light and 110V Receptacle included. 12V DC auxiliary power provides full function for lowering in the event

of main power loss. Optional systems include pilot-operated hydraulic controls for Lift, Swing, Telescope and Drive functions. Low pressure hydraulic oil is used to signal a chassis-mounted main control for smooth operation.

GROUND CONTROLS

Reciprocal control of boom functions allows complete operation from ground during maintenance and emergencies. Complete instrumentation includes Platform/Ground Selector Switch, Overrides for ground user control of Lift, Swing and Telescope, Keyed Master Switch, Ignition/Start Controls, Auxiliary Power, Manual Descent for boom retract and lower.

HYDRAULIC SYSTEM

High flow three-section gear pump provides substantial flow to allow multi-function machine operation. Large volume, open center, vented reservoir enables constant recycling of hydraulic oil to maintain low system temperature. Proportional control valve provides infinitely variable control in direct proportion to platform control lever movement.

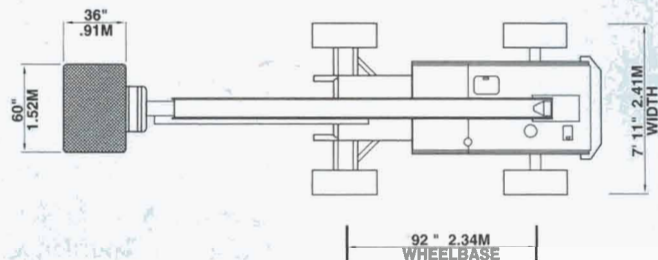
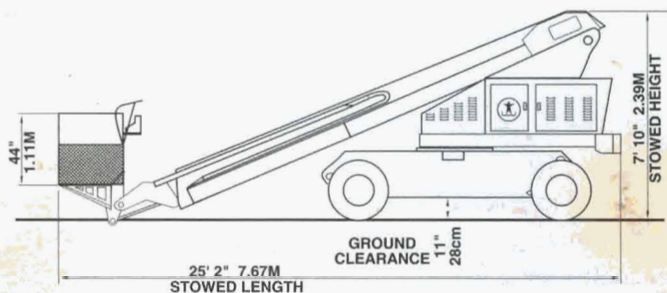


Tubular steel platform with heavy duty mesh floor provides durable work surface while standard rotator aides in platform positioning.

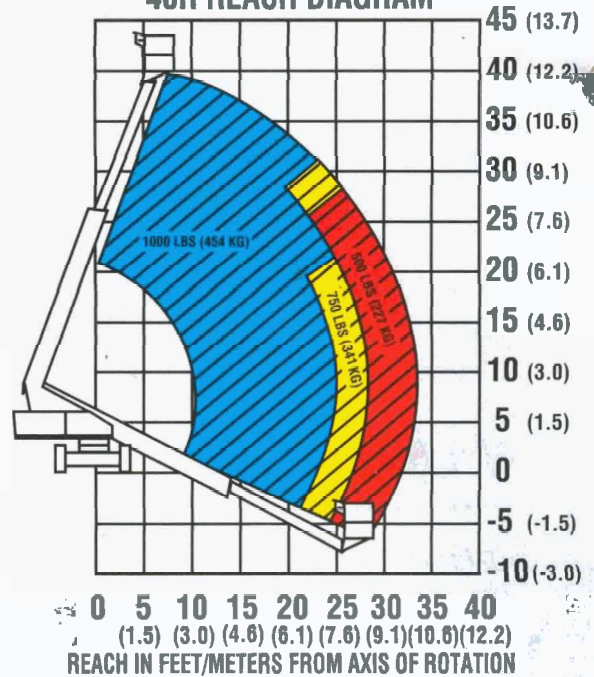
MACHINE SPECIFICATIONS

| DIMENSIONS | 40H (2WD) | 40H (4WD) |
|----------------------------------|---|---|
| PLATFORM HEIGHT | 40 ft. 12.2m | 40 ft. 12.2m |
| WORKING HEIGHT | 46 ft. 14.0m | 46 ft. 14.0m |
| PLATFORM DIMENSIONS-STD. | 36" x 60" x 44" .91m x 1.52m x 1.11m | 36" x 60" x 44" .91m x 1.52m x 1.11m |
| PLATFORM CAPACITY (restricted) | 1000 lbs. (454 kg.) | 1000 lbs. (454 kg.) |
| PLATFORM CAPACITY (unrestricted) | 750 lbs. (341 kg.) | 750 lbs. (341 kg.) |
| STOWED LENGTH | 25 ft., 2 in. 7.67m | 25 ft., 2 in. 7.67m |
| STOWED HEIGHT | 7 ft., 10 in. 2.39m | 7 ft., 10 in. 2.39m |
| WIDTH | 7 ft. 11 in. 2.41m | 7 ft. 11 in. 2.41m |
| TAILSWING | 2 ft. 10 in. .9m | 2 ft. 10 in. .9m |
| GROSS WEIGHT (approx) | (1) 11,600 lbs. (1) 5,266 kg. | (1) 12,000 lbs. (1) 5,448 kg. |
| ENGINE (gas) | 63 HP @ 2800 rpm | 63 HP @ 2800 rpm |
| ENGINE (diesel) | 42 HP @ 3000 rpm | 42 HP @ 3000 rpm |
| MAIN PUMP OUTPUT | 39 gpm @ 3000 rpm 148 L/min. | 39 gpm @ 3000 rpm 148 L/min. |
| AUXILIARY PUMP OUTPUT | 4.75 gpm 18 L/min. | 4.75 gpm 18 L/min. |
| HYDRAULIC TANK CAPACITY | 37 U.S. gals. 140.2 L | 37 U.S. gals. 140.2 L |
| FUEL TANK CAPACITY | 37 U.S. gals. 140.2 L | 37 U.S. gals. 140.2 L |
| TRAVEL SPEED | 4.5 mph 7.2 km/hr | 4.0 mph 6.4 km/hr |
| GRADEABILITY | 25% | 40% |
| TURNING RADIUS (outside) | 14° 16ft., 6 in. 5.1 m | 22° 16ft., 6 in. 5.1 m |
| HORIZONTAL REACH | 33 ft. 0 in. 10.1m | 33 ft. 0 in. 10.1m |
| TIRES | 12.5 x 15 | (2) 12.5 x 15 |
| WHEELBASE | 92 in. 2.34m | 92 in. 2.34m |
| GROUND CLEARANCE | 11 in. 28cm | 11 in. 28cm |

(1) GVW may increase to meet country standards or with the addition of optional equipment.
 (2) Also available with hi-flotation 14 x 17.5 tires; ground clearance increases to 13" (33cm).

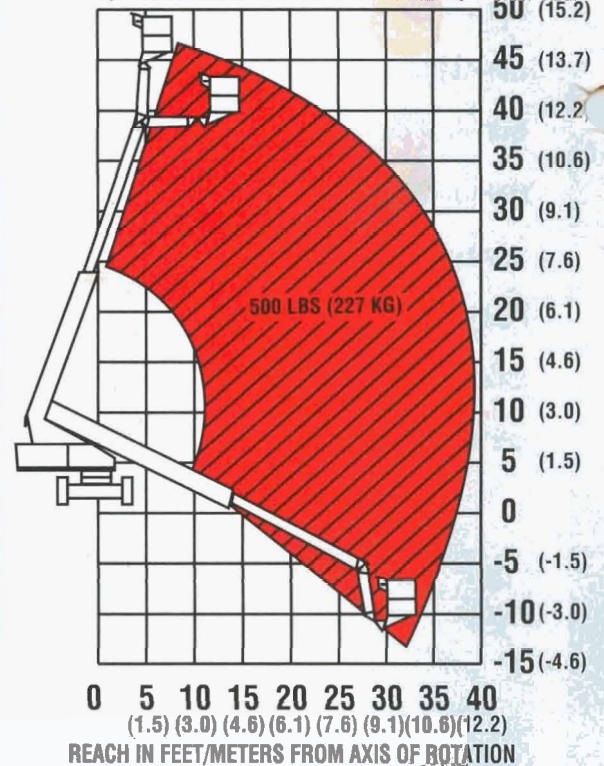


40H REACH DIAGRAM



40H+6 REACH DIAGRAM

(JLG's Patented Extend-A-Reach Feature)





Two wheel drive units are available with an optional oscillating front axle. The oscillating axle floats with the terrain to maximize wheel contact for superior traction and will outperform many fixed axle four wheel drive units.

OPTIONAL EQUIPMENT

Oscillating Axle, Four-Wheel Drive, Deutz F3L1011 42 HP Diesel Engine, Extend-A-Reach, Dual Fuel (LP/Gasoline), Foam-Filled Tires, Airline Package, Platform sizes to 8' (2.44m), Hostile Environment Packages, Cold Weather Start Packages, CSA Package.

EXTEND-A-REACH

JLG's patented Extend-A-Reach option is a six-foot articulating boom section attached to the end of the fly boom. The main feature of this extension arm is its ability to articulate 15 degrees above or 80 degrees below horizontal of the main boom.

The Extend-A-Reach option gives the operator the benefit of "up and over" or "out and down" access in areas where a straight boom would encounter interference with such obstacles as structural steel framework, aircraft tailsections, dock areas and overhead duct work. Articulation is accomplished by a solenoid valve actuated hydraulic cylinder enclosed within the extension tube. Platform leveling is accomplished through a master slave cylinder combined with a pantographic link attaching the platform to the fly boom.

40H / 40H+6 COMPARISON CHART

| SPECIFICATIONS | 40H | 40H+6 |
|--|---|---------------------------------|
| MAXIMUM HEIGHT | 40 ft. 0 in. 12.2m | 46 ft. 0 in. 14.02m |
| MAXIMUM REACH | 33 ft. 0 in. 10.06m | 39 ft. 6 in. 12.04m |
| BELOW GROUND REACH | 4 ft. 0 in. 1.22m | 9 ft. 11 in. 3.02m |
| STOWED LENGTH | 25 ft., 2 in. 7.67m | 26 ft. 10 in. 8.18m |
| BOOM ANGLE (above horiz.) (below horiz.) | 74° -22° | 74° +15° ART. -22° -80° ART. |
| PLATFORM CAPACITIES (unrestricted) (restricted) | 500 lbs. (227 kg) 1000 lbs. (454 kg) | 500 lbs. 227 kg |
| PLATFORM SIZES (standard) | 36 in. x 60 in. .91m x 1.52m | 36 in. x 60 in. .91m x 1.52m |
| GROSS WEIGHT (approx) | (1) 11,600 lbs. (1) 5,266 kg | (1) 13,350 lbs. (1) 6,055 kg |

(1) GVW may increase to meet country standards or with the addition of optional equipment



The Extend-A-Reach option articulates 15° above or 80° below horizontal of main boom to give operator "up and over" or "out and down" access.

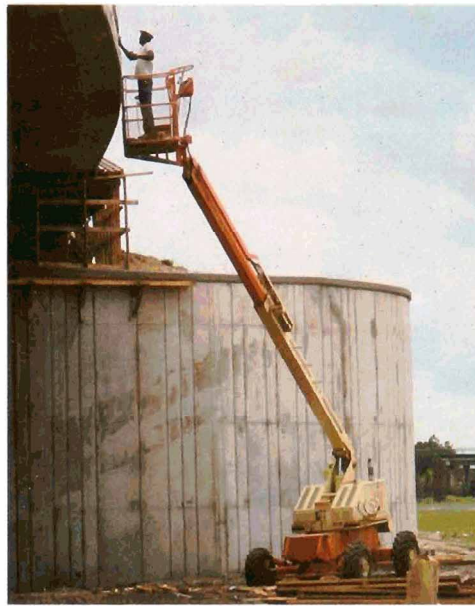
OPTIONAL EQUIPMENT

Oscillating Axle, Four-Wheel Drive, Deutz F3L1011 42 HP Diesel Engine, Extend-A-Reach, Dual Fuel (LP/Gasoline), Foam-Filled Tires, Airline Package, Platform sizes to 8' (2.44m), Hostile Environment Packages, Cold Weather Start Packages, CSA Package.

EXTEND-A-REACH

JLG's patented Extend-A-Reach option is a six-foot articulating boom section attached to the end of the fly boom. The main feature of this extension arm is its ability to articulate 15 degrees above or 80 degrees below horizontal of the main boom.

The Extend-A-Reach option gives the operator the benefit of "up and over" or "out and down" access in areas where a straight boom would encounter interference with such obstacles as structural steel framework, aircraft tailsections, dock areas and overhead duct work. Articulation is accomplished by a solenoid valve actuated hydraulic cylinder enclosed within the extension tube. Platform leveling is accomplished through a master slave cylinder combined with a pantographic link attaching the platform to the fly boom.



High strength steel boom sections, steel power tracks with self lubricating discs, and all steel platforms with powered rotators are just a few of the features standard on the 40H.

Planetary speed reducer driven by hydraulic motor provides 360 degree continuous rotation. Multiple disc brake is spring-applied, hydraulically-released. Slip-through feature reduces risk of damage to boom and swing components due to sudden stops or excessive external side forces.

DRIVE SYSTEM

Planetary gear reduction on rear wheels is driven by two-speed reversible hydraulic motors. Flow-divide hydraulic system maintains pressure for increased grade-climbing capability. Automatic spring-applied, hydraulically released disc brakes on all drive wheels.

OSCILLATING AXLE/FOUR-WHEEL DRIVE

Optional oscillating front axle "floats" with terrain to maximize wheel contact for superior traction on difficult job sites and outperforms many fixed axle four-wheel drive units. Also available with JLG's high-powered four-wheel drive system which features torque hub drive on all four wheels, balanced by three flow dividers for responsive, powerful mobility. Hi-flotation 12.5 x 15 self-cleaning tires offer excellent terrainability, while optional 14 x 17.5 offer greater flotation and ground clearance.



Optional oscillating axle and four wheel drive combination provide the means to negotiate demanding conditions.

BOOM

Boom sections are manufactured from high strength alloy steel plates with heavier plates used for top and bottom boom assembly. The plates are fixtured and welded simultaneously on an automatic four-headed welding machine. The result is a durable boom with minimal deflection, long service life and an optimum strength-to-weight ratio. Boom extension is by double-acting hydraulic cylinder with load holding valve. Self-lubricating discs enable smooth movement of the rugged all-steel powertrack, which is externally mounted for ease of inspection and maintenance.

TURNTABLE/FRAME



*option articulates 15° above or 80° below horizontal
operator "up and over" or "out and down" access.*

JLG® PERFORMING AT A HIGHER LEVEL