

### Specifications

Preliminary Specifications Subject to Change  
Effective Date: May, 2014

MODEL	Z-62/40	
Measurements	US	Metric
Working height maximum*	67 ft 11 in	20.87 m
Platform height maximum	61 ft 11 in	18.87 m
Horizontal reach maximum	40 ft 11 in	12.47 m
Up and over clearance maximum	26 ft 8 in	8.13 m
<b>A</b> Platform length - 8 ft / 6 ft model	3 ft / 2 ft 6 in	0.91 m / 0.76 m
<b>B</b> Platform width - 8 ft / 6 ft model	8 ft / 6 ft	2.44 m / 1.83 m
<b>C</b> Height - stowed	8 ft 6 in	2.56 m
Height - transport (jib tucked under)	9 ft 6 in	2.90 m
<b>D</b> Length - stowed	30 ft 4 in	9.25 m
Length - transport (jib tucked under)	24 ft 10.5 in	7.58 m
<b>E</b> Width	8 ft 2 in	2.49 m
<b>F</b> Wheelbase	8 ft 3 in	2.51 m
<b>G</b> Ground clearance - center	1 ft 2.5 in	0.37 m

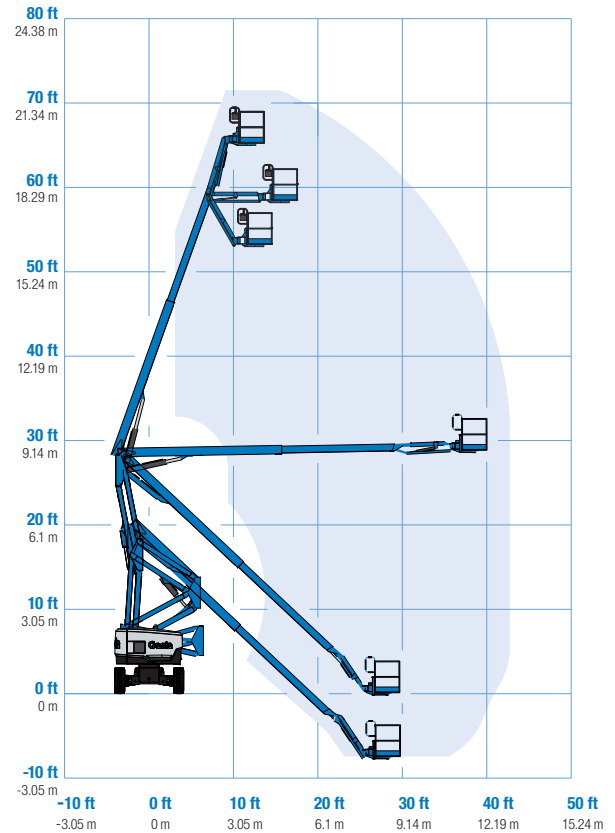
### Productivity

Lift capacity	500 lbs	227 kg
Platform rotation	160°	
Vertical jib rotation	135°	
Turntable rotation	360° continuous	
Turntable tailswing	zero	
Drive speed - stowed	3.0 mph	4.8 km/h
Drive speed - raised**	0.68 mph	1.1 km/h
Gradeability - 2WD - stowed***	25%	25%
Gradeability - 4WD - stowed***	45%	45%
Turning radius - inside	7 ft 9 in	2.36 m
Turning radius - outside	18 ft 2 in	5.54 m
Controls	12V DC proportional	
Tires	355/55D 625	

### Power

Power source	48 hp (35.79 kW) Deutz diesel T4f D2.9L4***** 48 hp (35.79 kW) Perkins diesel T4f 404F-22***** 74 hp (55 kW) Deutz turbo diesel T4i D2011L04i 75 hp (56 kW) Ford gas/LPG MSG425	
Auxiliary power unit	12V DC	
Hydraulic tank capacity	35 gal	132.5 L
Fuel tank capacity - diesel	35 gal	132.5 L
- gas	20 gal	75.7 L

### Range Of Motion Z-62/40



\* The metric equivalent of working height adds 2 m to platform height. U.S. adds 6 ft to platform height.

\*\* In lift mode (platform raised), the machine is designed to operate on firm, level surfaces only.

\*\*\* Gradeability applies to driving on slopes. See operators manual for details regarding slope ratings.

\*\*\*\* Weight will vary depending on options and/or country standards.

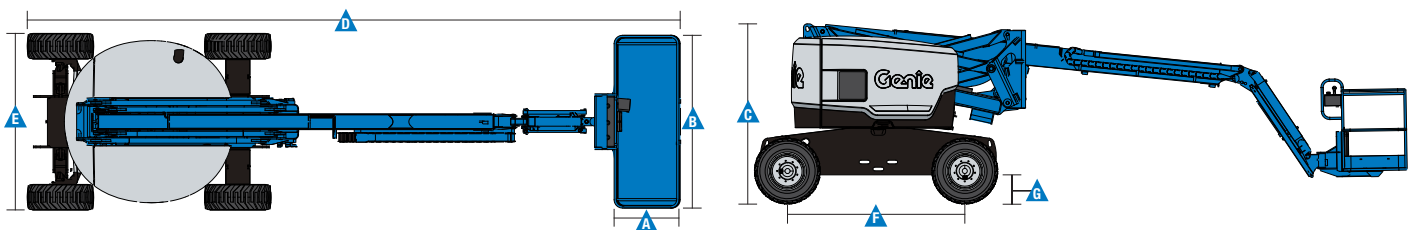
\*\*\*\*\* Tier 4f engines available in US only.

### Weight\*\*\*\*

	21,900 lbs	9,934 Kg
--	------------	----------

### Standards Compliance

ANSI A92.5, CSA B354.4, EN 280, AS 1418.10



### Features

#### Standard Features

##### Measurements

- 67 ft 11 in (12.87 m) working height
- 40 ft 11 in (12.47 m) horizontal reach
- 25 ft 7 in (7.80 m) up and over clearance
- Up to 500 lbs (227 kg) lift capacity

##### Productivity

- Self-leveling platform
- Hydraulic platform rotation
- Proportional joystick controls
- Drive enable
- AC power cord to platform
- Horn
- Hour meter
- Tilt alarm
- Descent alarm
- Zero tailswing
- 360° continuous turntable rotation
- Locking turntable covers
- Positive traction drive
- 2 speed wheel motors
- Hydraulic oil cooler

##### Power

- 12V DC auxiliary power
- Engine protection package
- Anti-restart engine protection
- Auto engine fault shutdown
- Intake air heater (Deutz engine)

#### Easily Configured To Meet Your Needs

##### Platform Options

- Steel 8 ft (2.44 m) (standard)
- Steel 6 ft (1.83 m)
- Steel 8 ft (2.44 m) tri-entry\*\*

##### Jib

- 5 ft (1.52 m) jib boom

##### Engine Options

- 48 hp (35.79 kW) Deutz diesel T4f\* (standard)
- 48 hp (35.79 kW) Perkins diesel T4f\*
- 74 hp (55 kW) Deutz turbo diesel T4i\*\*
- 75 hp (56 kW) Ford gas/LPG

##### Drive Options

- 2WD
- 4WD

##### Axle Options

- Active oscillation (standard on 4WD)
- Non-oscillating

##### Tire Options

- Rough terrain air-filled (standard)
- Rough terrain foam-filled
- High flotation air-filled
- Sealant treated air-filled

#### Options & Accessories

##### Productivity Options

- Platform swing gate
- Half mesh platform inserts with swing gate
- Platform top auxiliary rail
- Welder package\*
- Welder Ready package\*
- Air line to platform
- Biodegradable hydraulic oil
- Deluxe Hostile environment kit
- Aircraft protection package (6ft platform only)
- Thumb rocker steer
- Tool tray
- Pipe cradle (pair)
- Alarm package
- Panel cradle package\*
- Lockable platform control box covers
- Tow package
- Work light package
- Operator Protective Structure
- Operator Protective Alarm

##### Power Options

- Engine gauge package
- AC generator packages (110V/60Hz 220V/50Hz, 3000W)
- Cold Weather Packages
- Diesel scrubber/spark arrestor (catalytic muffler)
- LPG tank 33.5 lbs (15.19 kg) capacity



\* Available on select models  
\*\* Not available on CE machines

#### Genie United States

18340 NE 76th Street  
P.O. Box 97030  
Redmond, Washington 98073-9730  
Telephone +1 (425) 881-1800  
Toll Free in USA/Canada +1 (800)-536-1800  
Fax +1 (425) 883-3475

#### Distributed By: