



Model 944E-42 TELEHANDLER

Performance

Rated Capacity

9,000 lb (4,082 kg)

Maximum Lift Height

42 ft (12.8 m)

Frame Leveling

12 degrees

Lift Speed (boom retracted, no load)

Up: 16 sec

Down: 13 sec

Boom Speed (no load)

Extend: 13 sec

Retract: 13 sec

Travel Speed Forward

20 mph (32 kmph) max.

Drawbar Pull (loaded)

24,350 lb (11,045 kg) in first gear

Operating Weight Without Carriage and Forks

26,860 lb (12,184 kg)

Forward Reach

35 ft 6 in. (10.8 m)

Horizontal Load Placement Distance

80 in. (2.0 m)

Standard Specifications

Engine

Make and Model Cummins QSB4.5T Turbo

Fuel Diesel

Cycles 4

No. of Cylinders 4

Displacement 276 cu in (4.5 L)

Torque Rating 305 lb ft (414 Nm)

@ 1,500 rpm

Rated Speed 2,500 rpm

Max. Gross BHP 110 hp (82 kW)

Fuel Tank 46 gal (174 L)

Engine Block Heater
Engine Grid Heat System

Engine Filters

Two-stage centrifugal air cleaner.

Serviceable fuel filter/water separator.

Full-flow replaceable-element engine oil filter.

Electrical System

Voltage: 12V

Alternator: 65 amp

Battery: Two batteries, each with 850 cold cranking amps at 0°F

Transmission

Modulated powershift with integral full gear-drive dropbox.

4-speed forward and 3-speed reverse.

Axles

Full-time planetary 4-wheel drive.

Limited slip front differential.

Stabil-TRAK™ rear axle stability system.

Brakes

Inboard mounted internal wet disc brakes.

Parking Brakes

Spring applied, hydraulically released parking brake with transmission declutch feature.

Tires

Standard: Air-filled 15:50 x 25 – 12 ply

Fenders

Cab

Certified ROPS/FOPS structure.

Steering wheel mounted horn and back-up alarm.

Rear view mirrors.

Steering

4-wheel circle, 4-wheel crab, 2-wheel front.

Instruments

Hydraulic oil temperature, fuel level, tachometer, and hourmeter gauges.

Warning indicators for transmission oil temperature, hydraulic oil temperature, engine oil pressure, alternator charging, air filter restriction, hydraulic oil filter restriction, and low brake pressure.

Indicators for parking brake and Stabil-TRAK system.

Controls

Multi-function, fully proportional pilot operated joystick controls for boom functions, carriage tilt, auxiliary control, frame leveling, and horizontal load placement system.

Hydraulic System

Load sensing dual gear pumps.

33.5 gal (127 L) system capacity.

Auxiliary Hydraulics

Used for all attachments equipped with cylinders or other hydraulic components. Consists of valves, controls and hydraulic lines.

Accessories & Options

Cab Enclosure

Windshield, top and rear glass with wipers/washers, split cab door, tilt-out rear window. Defrost/heater and A/C options.

Light Package

Roadway lights, work lights, strobe, beacon options.

Tire Options

Foam-filled

Steel-belt

Rock-tread

Suspension Seats

Single Joystick Control

Attachments

Standard Carriage

48 in. (1.2 m), 50 in. (1.3 m),

60 in. (1.5 m) or 72 in. (1.8 m)

± 10° Side Tilt Carriage

48 in. (1.2 m), 50 in. (1.3 m),

60 in. (1.5 m) or 72 in. (1.8 m)

± 45° Swing Carriage

72 in. (1.8 m)

Pallet Forks

2.36 x 4 x 48 in.

(60 mm x 102 mm x 1.2 m)

Lumber Forks

1.75 x 7 x 60 in.

(45 mm x 178 mm x 1.5 m)

Block Forks

2 x 2 x 48 in.

(51 mm x 51 mm x 1.2 m)

Truss Boom With or Without Winch

10 ft (3.0 m)

Truss Boom With Winch

3 ft (0.91 m)

Concrete Bucket

0.5 cu yd (0.38 m³)

Light Material Bucket

1.25 cu yd (0.95 m³) capacity

96 in. (244 cm) width

Sheet Material Handler

Sweeper

Hydraulic driven

Hydraulic Fork Position Carriages

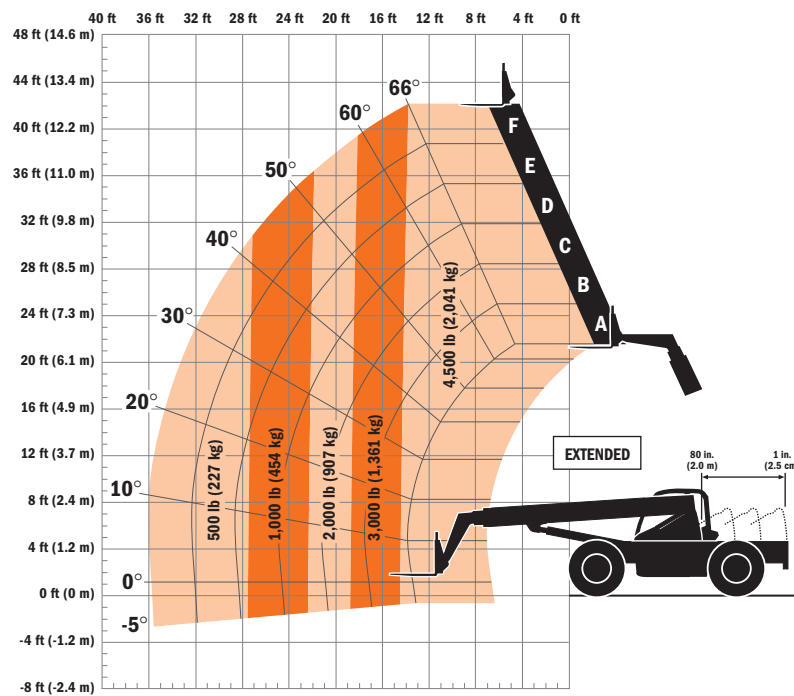
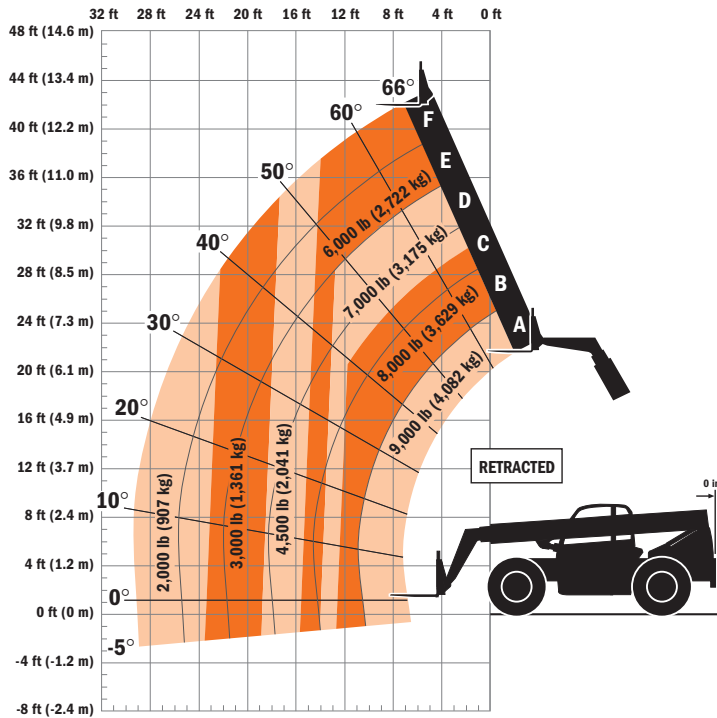
50 in. (1.27 m)

Single and dual fork options

Earth Auger



Model 944E-42 TELEHANDLER



Dimensions

- Length (less forks) 253 in. (6.43 m)
- Width 101 in. (2.56 m)
- Height 95.5 in. (2.42 m)
- Wheelbase 131 in. (3.33 m)
- Ground Clearance 16 in. (406 mm)
- Outside Turning Radius . . 147 in. (3.73 m)
- Max. Reach from Front Tires to
24 in. (609 mm) Load Center . . . 35.5 ft
(10.82 m)

IMPORTANT

Rated lift capacities shown are with machine equipped with carriage and pallet forks. The machine must be level on a firm surface with undamaged, properly inflated tires. Machine specifications and stability are based on rated lift capacities at specific boom angles and boom lengths. (If specifications are critical, the proposed application should be discussed with your dealer.)

DO NOT exceed rated lift capacity loads, as unstable and dangerous machine conditions will result.

DO NOT tip the machine forward to determine the allowable load.

Use only JLG approved attachments with proper material handler model/attachment load capacity charts displayed in the operator's cab. OSHA requires all rough terrain forklift operators be trained according to OSHA 29 CFR 1910.178 (1).



JLG Industries, Inc.

1 JLG Drive
 McCConnellsburg, PA 17233-9533
 Telephone 717-485-5161
 Toll-free in US 877-JLG-LIFT
 Fax 717-485-6417
 www.jlg.com

Due to continuous product improvements, JLG Industries reserves the right to make specification and/or equipment changes without prior notification. This machine meets or exceeds ASME B56.6-1998 as originally manufactured for intended applications.

Form No.: SS-L944E-42-0104-15M
 Part No.: 3132501
 Printed in USA
 R020501